



## CENTER LIGHT PANEL

### Installation Instructions

#### STEP 1:

- A. Unpack all cartons and lay out parts.
- B. Compare the parts with hardware kit as shown in Figure 1.

PART NUMBER	DESCRIPTION	QTY.
100189	BRKT,LGHTPNL,STL,BLK,ADJBL	6
I31CNCF/RBZ	HDWR,NUT,RBZ,FLNG-LOCK,5/16-18	16
100433	HDWR,CARBLT,RBZ,5/16-18X1	12
I31C100BSF/RBZ	HDWR,HHCS,RBZ,SERR,5/16-18X1	4
100963	BOX,9X3X3,CRBRD,CNTR,LGHTPNL	1

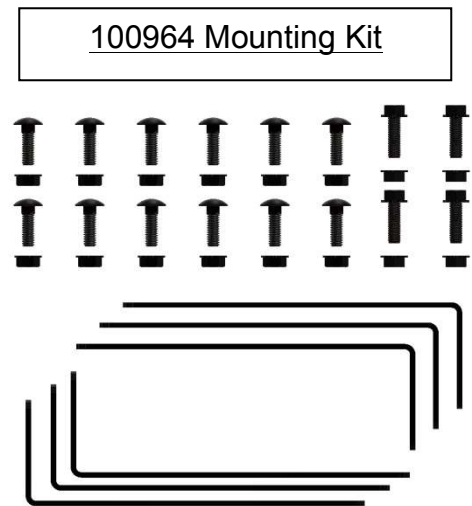
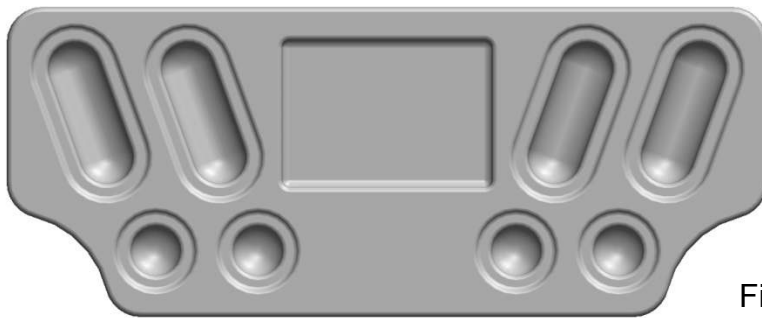


Figure 1

#### STEP 2: Assemble Minimizer bracket kit 100964.

- A. Use (4) of the (6) brackets (100189) provided and (4) 5/16"-18X1" bolts (100433), (4) 5/16"X18 nuts (I31CNCF/RBZ) to bolt the brackets together. Assemble (2) sets of brackets with an outside dimension of 13.88 inches as shown in Figure 2.

**Notes:** Minimizer center light panels are designed to be installed with Minimizer the bracket kit 100964. Minimizer center light panel installations that do not include the aforementioned brackets will not be covered under the manufacturer's warranty.

Attachment of other devices to the center light panel such as mudflaps, or bumpers is not recommended and will void the manufacturer's warranty.

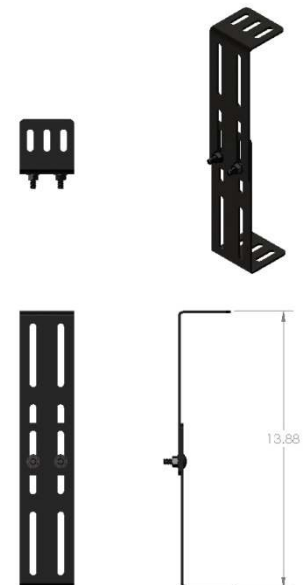


Figure 2

### STEP 3: Set locations for the Minimizer bracket kit.

- A. Mount the two unassembled brackets to the rear of the vehicle frame as shown in Figure 3.0. Do not exceed the maximum measurement shown in Figure 3.1. The exact placement of the brackets on the vehicle will help to determine the mounting hole locations in the panel as discussed in step 3B.



Figure 3.1



- B. Prepare to drill four holes in the panel for the two sets of assembled brackets. Use Figure 4 below as a guide for marking and drilling the panel.

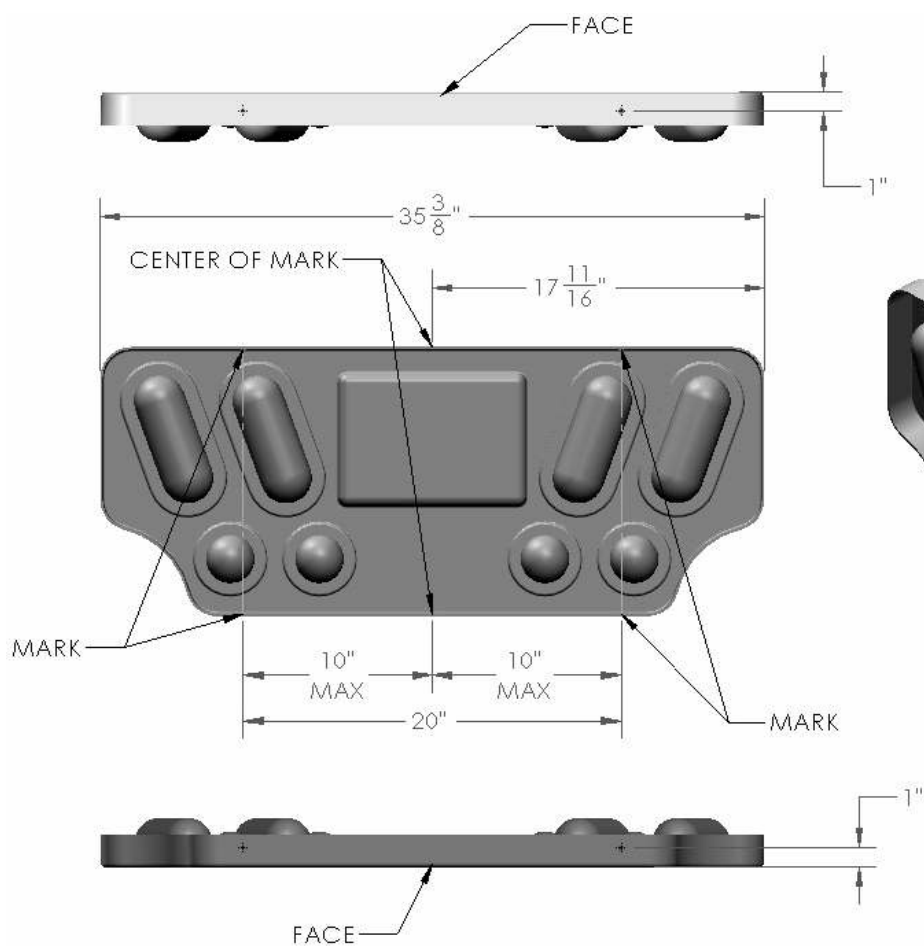
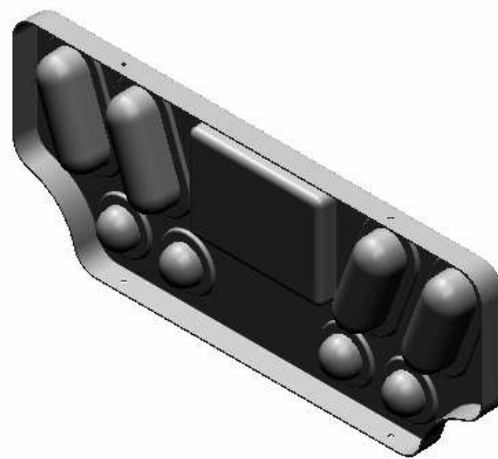


Figure 4

This is being demonstrated on the cavity panel, the dimensions are the same for the skull and crossbones panel.



#### **STEP 4: Final assembly of bracket kit.**

- A. Use the 5/16" carriage bolts provided in the kit to attach the two assembled brackets to the single brackets that attach to the vehicle frame. Be sure to assemble the hardware loosely until the panel assembly is in the final position on the vehicle. See STEP 6.

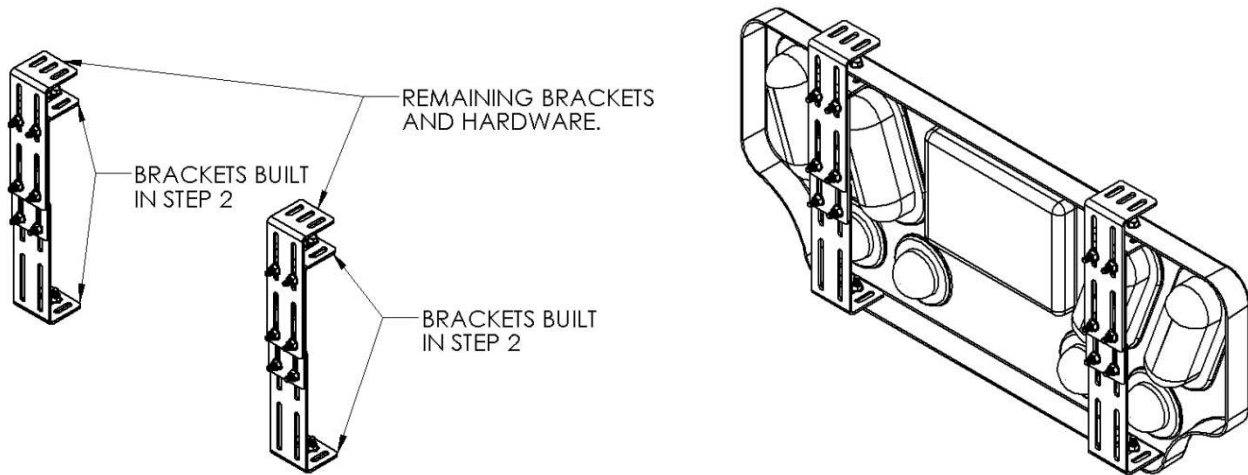


Figure 5

#### **STEP 5: Install lights and wiring (lights, wiring, and hardware are not supplied).**

- A. Minimizer has installed and tested lights from three manufacturers (See page 4 for further details)
- Place the light into proper location and center the light in the pocket.
  - Use the light bracket as a template to mark the mounting hole locations (Figure 6).
  - Remove the lights and drill all the pilot holes using a 1/8" drill bit. Be sure to angle the drill bit to prevent drilling into the light pocket (Figure 7).
  - Drill a hole in the bottom of the light pocket using the smallest drill that will allow the wires in or out of the pocket (Figure 8). After wiring is complete, place a small amount of silicone caulk to fill the gaps around the wiring.



Figure 6



Figure 7

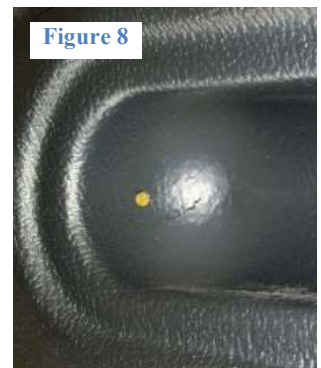


Figure 8

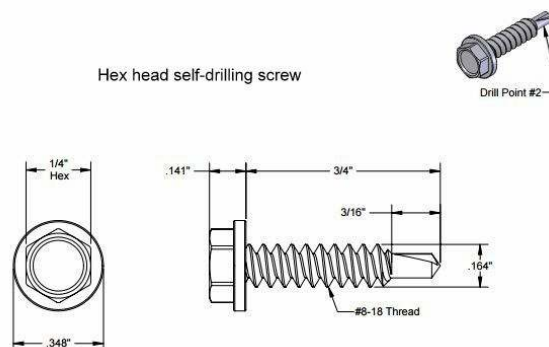
**Note:** Currently Minimizer does not provide light kits or wiring specifically for the center light panel. Minimizer has tested lights and mounting flange products from three manufacturers. Compatible products are listed in Table 1 below. Products from other manufacturers may also be compatible.

Table 1

COMPATIBLE LIGHTING PRODUCTS									
MANUFACTURER		SIZE	PART NUMBER				DESCRIPTION	QTY	
1	Grote	6" OVAL	54672				SIGNAL LIGHTING 6" Oval LED S/T/T with Integrated Back-up Lamp	4	
			43223-CHROME *	43220-GRAY *	43222-BLACK *	BRACKETS & GROMMETS Theft-Resistant Mounting Flange for 6" Oval Lamps	4		
			67005			11" Long, Chassis Ground, 90° Plug, Blunt Cut Wires	4		
		2" ROUND	67016			11" Long, Chassis Ground - Blunt Cut Wires	4		
			G3002-RED			CLEARANCE/MARKERS Hi Count® 2" 9-Diode LED Clearance/Marker Lamp	4		
			43153-CHROME *	43150-GRAY *	43152-BLACK *	BRACKETS & GROMMETS Theft-Resistant Mounting Flange for 2" Round Lamps	4		
			67001			Double Seal, 6" Long, Ring Terminal Ground, Blunt Cut Wire	4		
MARKER LIGHTS #	49332			CLEARANCE/MARKERS MicroNova® Dot LED Clearance/Marker Lamp	2				
2	Maxxima	6" OVAL	M63322R			OVAL RED STOP/TAI/TURN	2		
			M63347			OVAL LED WHITE BACKUP LIGHT	2		
			M50900			3-PIN RIGHT ANGLE STT PLUG 10" LEADS	4		
			M63253CH			SNAP-ON OVAL PC FLANGE FOR 60 SERIES-GRAY	4		
		2" ROUND	M34260R			2" ROUND RED CLEARANCE MARKER	4		
			M50303			STAINLESS STEEL 2" SECURITY FLANGE	4		
			M50950			2-PIN RIGHT ANGLE CM PLUG 6" LEADS	4		
3	Truck-Lite	6" OVAL	60056R			60 Series LED S/T/T Black Flange Kit, 26 Diode, red	2		
			6063C			6 Inch Oval LED Back-Up lamp w/ integral flange, 24 diode pattern, clear	2		
			94706			8" Fit 'N Forget S/T/T Adapter 94706 EA 18	4		
		2" ROUND	30091R			Red, 30 Series Low Profile Marker & Clearance Fit N Forget Gray Flange Kit	4		
* DENOTES THAT ANY OF 3 LISTED ITEMS IN THE ROW ARE COMPATIBLE.									
# INDICATES TO REFERENCE PAGE 5 FOR FURTHER DETAILS ON THE APPLICATION OF ITEM 49332.									

- e. Once all wiring is complete, use self-drilling screws to attach the lights to the panel. See Figure 9 for recommended screw size. (Screws are not supplied)

Figure 9



- f. When screwing the light to the panel, do not use electric tools. Use a hand held 1/4\" nut driver to prevent any damage the light bracket and the center light panel (Figure 10).



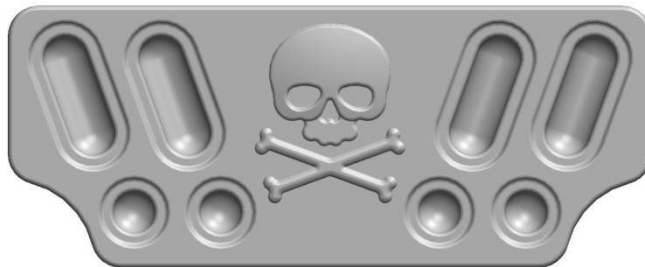
## STEP 6: Complete the installation.

- Once all lights are installed on the panel, and wired to the vehicle, refer back to STEP 4. Finish attaching the panel to the brackets and adjust the panel to the desired height on the vehicle frame.
- Verify torque for all fasteners. Recommended torque for the 5/16\" bolts that go through the poly panel is 5-ft-lbs. Torque all other 5/16\" bracket hardware to 19 ft-lbs.





**OPTIONAL SKULL AND CROSSBONES PANEL**  
(Part numbers: 100869, 100870, 100871, 100872, 100873, 100874, 100875)



**STEP 1: Recommendations for installing eyes (Wiring and lights are not supplied).**

- A. Drill a  $\frac{3}{4}$ " hole in the center of the Skull's eyes (Figure 1) and press a red light and grommet into hole (Figure 1.1 and 1.2).

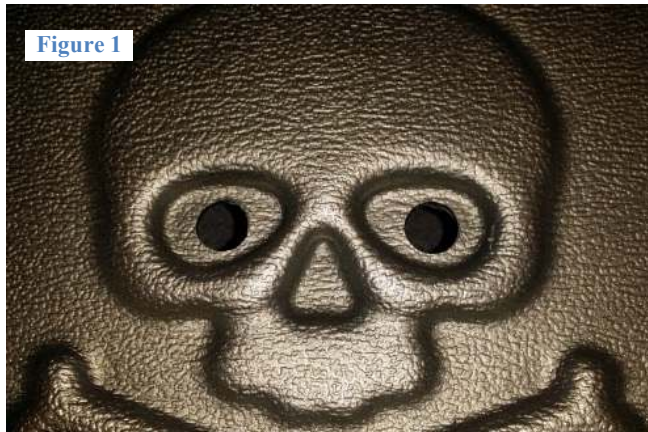


Figure 1



Figure 1.1



Figure 1.2