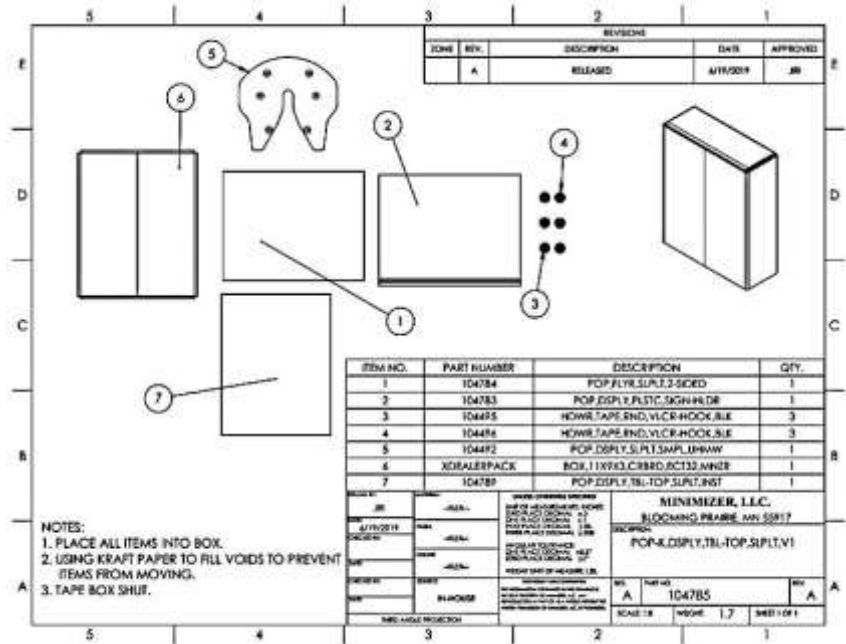




Document Title				Document #	Revision
Instructions for Slick Plate Table Top Display Kit 104785				104789	A
Author	Checked By		Effective Date	DCN #	Page 1 of 1
JRI	MJL	GRE	06/25/2019	210	

Instructions for Slick Plate Table Top Display Kit 104785

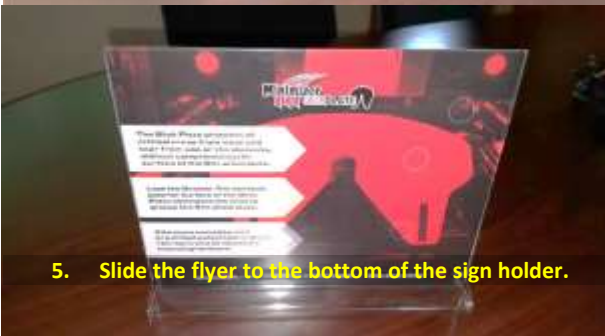
1. Unpack box and lay out parts.
2. Compare the parts with hardware kit 104785 as shown to the right.



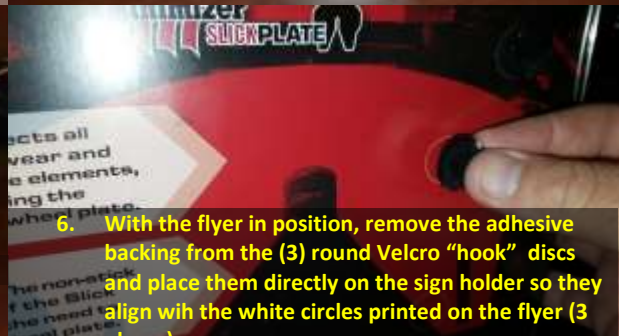
3. Clean the plastic sign holder and place it upright.



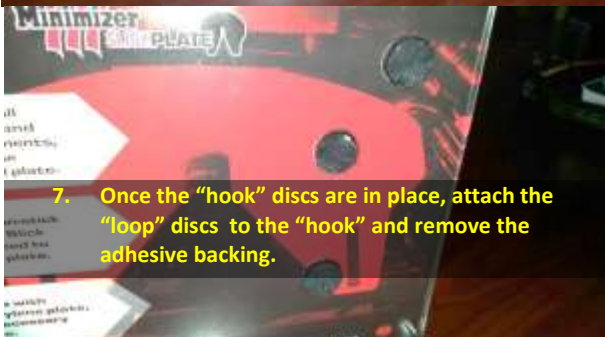
4. Separate the layers of the sign holder and insert the Slick Plate flyer.



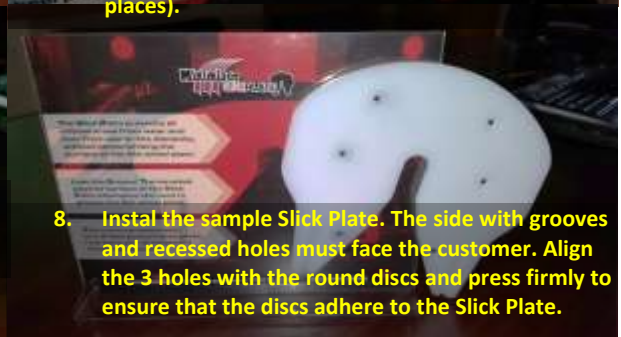
5. Slide the flyer to the bottom of the sign holder.



6. With the flyer in position, remove the adhesive backing from the (3) round Velcro "hook" discs and place them directly on the sign holder so they align with the white circles printed on the flyer (3 places).



7. Once the "hook" discs are in place, attach the "loop" discs to the "hook" and remove the adhesive backing.



8. Instal the sample Slick Plate. The side with grooves and recessed holes must face the customer. Align the 3 holes with the round discs and press firmly to ensure that the discs adhere to the Slick Plate.