

**TRUCK KIT 30.5 INCH BRACKET LENGTH**

ITEM NO.	PART NUMBER	DESCRIPTION	QTY.
1	10001543	Bracket,MFP,STL,CHAN,WLDMT,BLK	2
2	10003069	Hardware Pack,MDFLP,BRKT	1

**TRAILER KIT 26.0 INCH BRACKET LENGTH**

ITEM NO.	PART NUMBER	DESCRIPTION	QTY.
1	10003069	Hardware Pack,MDFLP,BRKT	1
2	10007787	Bracket,MFP,TRLR,STL,CHAN,WLDMT,BLACK	2

# IMPORTANT SAFETY INFORMATION

## READ BEFORE INSTALLING OR USING MINIMIZER MUD FLAP HANGERS

**SAFETY INSTRUCTIONS FOR INSTALLATION:**

- Use Minimizer Mud Flap Hangers only as specified.
- Carefully follow each of the installation instructions on the following pages.
- When using power tools, basic safety precautions should always be taken to reduce the risk of injury.

**TOOLS RECOMMENDED FOR INSTALLATION:**

- Marker
- Impact Driver
- Drill with 17/32" and 9/16" drill bits

**IMPORTANT:** Prior to installing the hangers on the truck or trailer frame, review hole sizes, spacing and check for proper clearances. If you need to drill holes, use a 17/32 up to a 9/16 drill bit. The mud flap hangers have two different bolt pattern options. **(See Figure 1)**

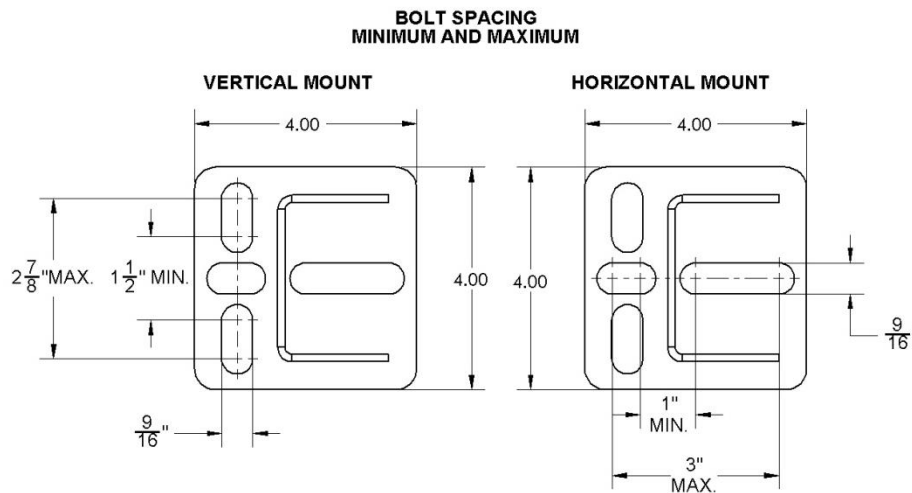


Figure 1

**INSTALLATION PROCEDURE:**

1. Remove the existing mud flap hangers from the truck or trailer. **(See Figure 2)**
2. Once removed, inspect the previous bracket location. If raw metal is visible, clean, prime, and paint all surfaces where the hangers will be mounted.

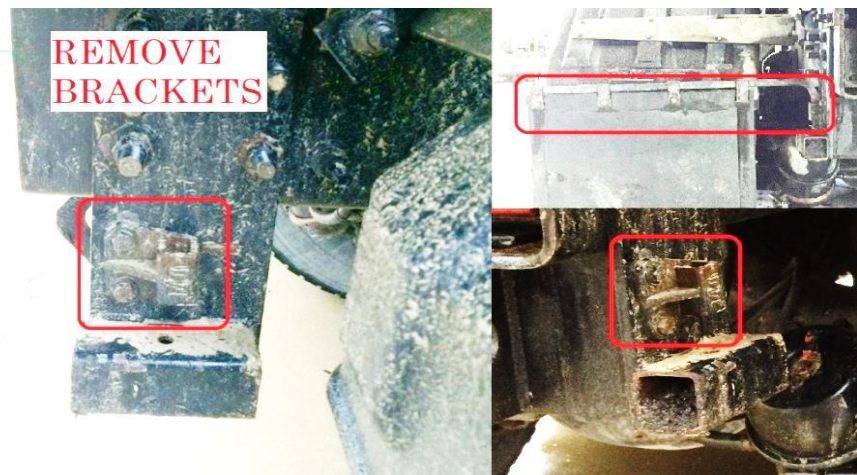


Figure 2

3. Use the existing holes in the frame to install the new mud flap hangers.

**(See Figures 3 and 4)**

4. Due to the different frame configurations of trucks and trailers, the existing holes may not be the correct size and/or location. If this is the case, drill new holes using a bracket as a template.



**Figure 3**

5. When hangers are installed, the web of the channel should be facing to the rear of the truck or trailer, similar to Figure 4.



**Figure 4**

6. Once the hangers are attached, proceed with installation of the Fast Flap Bracket system. Part #10001563 (Not included in this kit.)

**Note:** Follow the Fast Flap installation instructions when installing the Fast Flap brackets.

