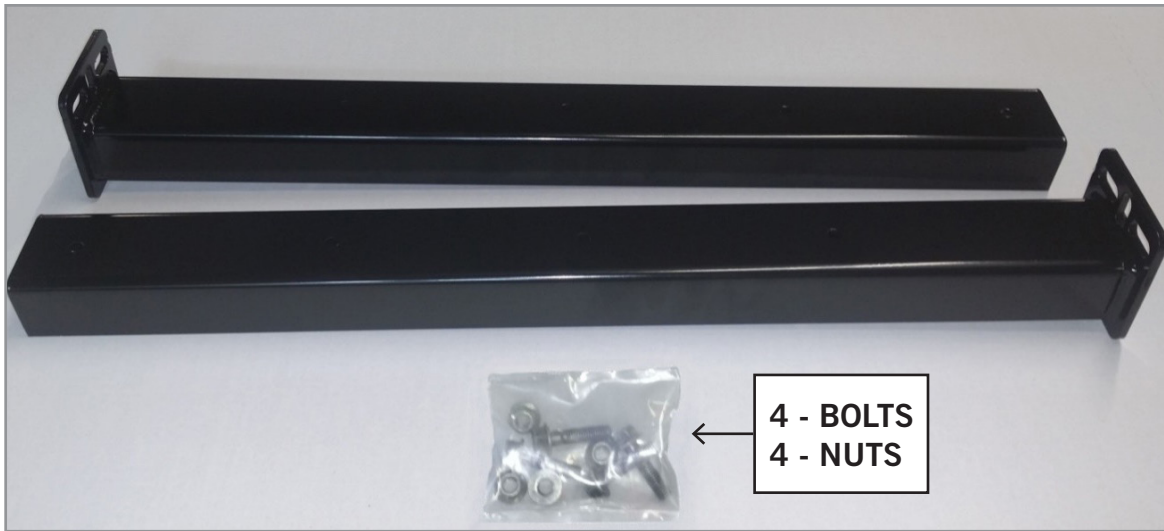




Document #10007789
Revision B



TRUCK KIT 30.5 INCH BRACKET LENGTH

ITEM NO.	PART NUMBER	DESCRIPTION	QTY.
1	10001543	Bracket, MFP, STL, CHAN, WLDMT, BLK	2
2	10003069	Hardware Pack, MDFLP, BRKT	1

TRAILER KIT 26.0 INCH BRACKET LENGTH

ITEM NO.	PART NUMBER	DESCRIPTION	QTY.
1	10003069	Hardware Pack, MDFLP, BRKT	1
2	10007787	Bracket, MFP, STL, CHAN, WLDMT, BLK	2

TRAILER KIT 28.0 INCH BRACKET LENGTH

ITEM NO.	PART NUMBER	DESCRIPTION	QTY.
1	10008099	Bracket, MFP, TRLR, CHAN, WLDMT, BLACK	1
2	10003069	Hardware Pack, MDFLP, BRKT	2

IMPORTANT SAFETY INFORMATION

READ BEFORE INSTALLING OR USING MINIMIZER MUD FLAP HANGERS

SAFETY INSTRUCTIONS FOR INSTALLATION:

- Use Minimizer Mud Flap Hangers only as specified.
- Carefully follow each of the installation instructions on the following pages.
- When using power tools, basic safety precautions should always be taken to reduce the risk of injury.

TOOLS RECOMMENDED FOR INSTALLATION:

- Marker
- Drill with 17/32" and 9/16" drill bits
- Impact Driver

IMPORTANT: Prior to installing the hangers on the truck or trailer frame, review hole sizes, spacing and check for proper clearances. If you need to drill holes, use a 17/32 up to a 9/16 drill bit. The mud flap hangers have two different bolt pattern options. (See Figure 1)

NOTE: Use minimum of two 1/2 " bolts (3 bolts preferred not provided) placed as far apart as possible. Recommend placing one bolt inside the channel and and another in the top and bottom for best performance.

INSTALLATION PROCEDURE:

1. Remove the existing mud flap hangers from the truck or trailer. Once removed, inspect the previous bracket location. If raw metal is visible, clean, prime, and paint all surfaces where the hangers will be mounted. (See Figure 2)
2. Use the existing holes in the frame to install the new mud flap hangers. (See Figures 3 and 4)
3. Due to the different frame configurations of trucks and trailers, the existing holes may not be the correct size and/or location. If this is the case, drill new holes using a bracket as a template.
4. When hangers are installed, the fast flap mounting surface of the channel should be facing to the rear of the truck or trailer, similar to Figure 4.
5. Once the hangers are attached, proceed with installation of the Fast Flap Bracket system. Part #10001563 (Not included in this kit.)

NOTE: Follow the Fast Flap installation instructions when installing the Fast Flap brackets.

FIGURE 1

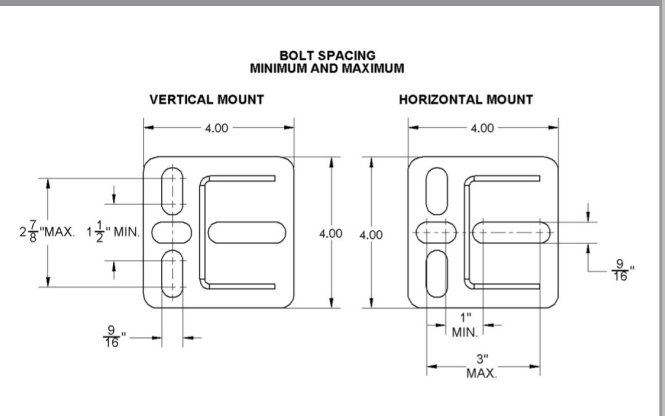


FIGURE 2

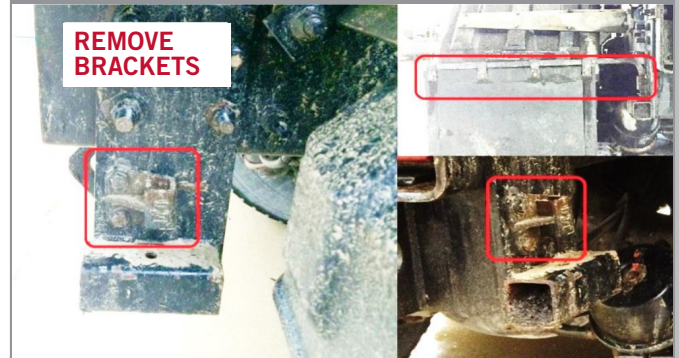


FIGURE 3



FIGURE 4



A DIVISION OF **HIGH BAR BRANDS, LLC**



**HIGH BAR
BRANDS**

2701 18th Street SW, Owatonna, MN 55060
1-800-248-3855 | Fax: 507-583-7540
www.highbarbrands.com