

IMPORTANT SAFETY INFORMATION

Item #10005493
September 2025

READ BEFORE INSTALLING OR USING MINIMIZER FLOOR MATS

PETERBILT - 10002663, 10002675, 10002722 & 10002728

- 365 – 2006 to 2025*
- 367 – 2008 to 2025*
- 384 – 2008 to 2017
- 386 – 2006 to 2017*
- 388 – 2008 to 2017
- 389 – 2008 to 2025*
- 389X – 2023 to 2025*

* See next page for detailed model/fit specifications

SAFETY INSTRUCTIONS FOR INSTALLATION:

- Use only with the specified vehicle make, model and year.
- Do not install on top of other floor mats.
- Install each floor mat with the Minimizer logo facing up.
- Use each floor mat only in its proper location in the vehicle.
- Install and use a retention hook for the driver side floor mat.
- Make sure that the floor mats fit properly in your vehicle floor space.
- Do not place additional floor mats on top of the Minimizer floor mats.
- Carefully follow each of the Installation Instructions for Minimizer Floor Mats on the following pages.

SAFETY INSTRUCTIONS FOR VEHICLE OPERATION:

- Before starting or operating the vehicle, verify that the Minimizer floor mats are installed correctly, that the driver side mat is secured by a retention hook, and that the driver side mat does not interfere with the accelerator, brake, or clutch pedal.
- Make sure there are no loose objects in the vehicle that could possibly interfere with the operation of the accelerator, brake, or clutch pedal.
- If your Minimizer floor mat becomes loose, stop the vehicle at the next safe location. Re-install the floor mat properly and securely. If that is not possible, remove the floor mat and place it in a location where it will not interfere with safe operation of the vehicle.
- Inform all drivers of these warnings before allowing them to operate a vehicle equipped with Minimizer floor mats.

Minimizer floor mats are specifically designed for certain vehicles and may be used safely only with those vehicles. **VERIFY THAT THE MAKE, MODEL, AND YEAR OF THE VEHICLE IN WHICH YOU ARE INSTALLING THE FLOOR MATS ARE IDENTIFIED BELOW AS BEING COMPATIBLE WITH THE MINIMIZER FLOOR MATS YOU HAVE SELECTED.**

If you have questions about these instructions or proper installation of your Minimizer floor mats, please contact Minimizer at (800) 248-3855

WARRANTY:

Minimizer Floor Mats are backed by a Lifetime Manufacturer's Warranty and are guaranteed against flaws due to faulty materials and/or unintended production variations. This warranty extends only to the original purchaser and excludes damage caused by abnormal use or conditions, including but not limited to extreme abrasive conditions and/or excessive exposure to chemicals such as bleach, gasoline and other fuels.

Disclaimer: Minimizer custom molded floor mats are not Peterbilt and Kenworth goods and PETERBILT and KENWORTH are federally registered marks of PACCAR, Inc.

PETERBILT FLOOR MAT KIT SPECIFICATIONS:

- Kit 10002663 – Designed for trucks with a manual transmission and a driver seat measurement of 27"
- Kit 10002722 – Designed for trucks that have automatic transmission controls mounted to the seat or dash and a driver seat measurement of 27"
- Kit 10002675 – Designed for trucks with a manual transmission and driver seat measurement of 28.75"
- Kit 10002728 – Designed for trucks that have automatic transmission controls mounted to the seat or dash and a driver seat measurement of 28.75"

See Figure 1 for driver seat measurement instructions.

Figure 1 - Driver Seat Measurement



- Measure from the lower kick panel of the dashboard to the front of the seat base. This measurement will determine the correct kit for your truck.

Figure 2 - 28.75" Measured at Front of Seat Base



- Driver seat position is dependent on engine type and transmission type.
- Trucks equipped with a factory thermos holder require hand trimming of the center mat. A raised trim line is molded into the floor mat to use as a guide and for liquid containment.
- Trucks equipped with an automatic transmission with floor mounted control tower must use Minimizer floor mat kit 10002688.

- Passenger Side Floor Mats are not compatible with a fixed base passenger seat with under seat battery storage.

Figure 3 - Ultra Shift Control Tower



Figure 4 - Passenger Seat with Battery Storage



INSTALLATION INSTRUCTIONS

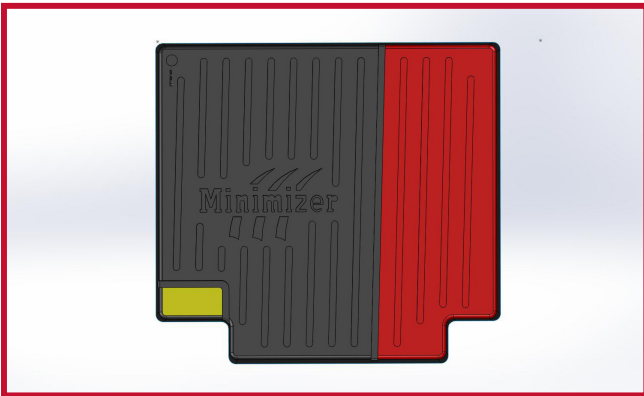
1. Remove other floor mats from the vehicle before installing Minimizer floor mats.
2. Install the Minimizer floor mats right side up, with the Minimizer logo visible.
3. Each Minimizer floor mat is contoured to fit a particular location in the vehicle and may be used safely only in that location.
4. The Minimizer floor mat package contains one driver mat, one passenger mat and one center mat.
5. Verify if the truck is equipped with a factory thermos holder between the driver and passenger seat as shown in Figure 5. If no thermos holder is present, install the center mat so the logo reads from left to right when facing forward in the cab. If the truck is equipped with a thermos holder, use a utility knife to trim the red shaded portion of the center mat as shown in Figure 6.

If the truck is equipped with a thermos holder, use a utility knife to trim the red shaded portion of the center mat as shown in Figure 6

Figure 5 - Factory Thermos Holder

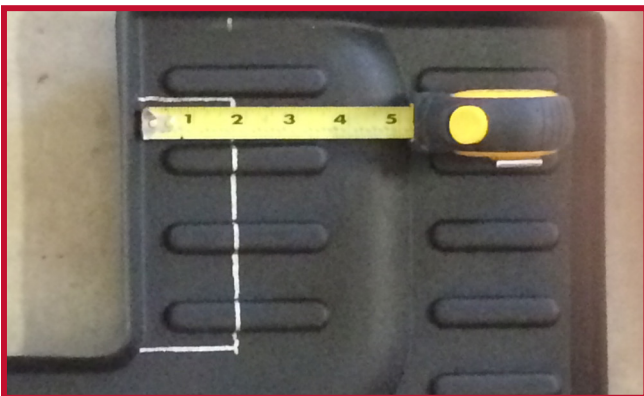


Figure 6 - Trimming Diagram



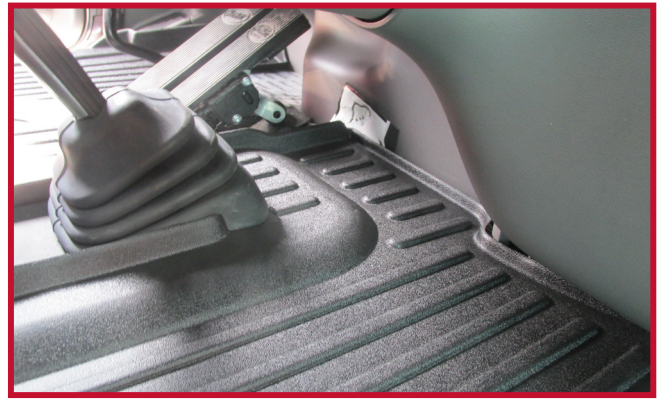
6. Trucks with a 18 speed transmission that are equipped with a MX13 Paccar engine require hand trimming of the passenger mat for proper fit around the gearshift. As shown in Figure 7, draw a line on the floor mat 1.75" away from the inside edge of the front lip around the gearshift. Use a utility knife to trim the floor mat material along the line. After trimming, the mat will lay properly in the truck as shown in Figure 8.

Figure 7 - Trimming Measurements



7. For cases where a fire extinguisher is mounted behind the driver seat, the left rear corner of the center mat shaded in yellow may be trimmed to allow for clearance.

Figure 8 - Fit After Trimming



8. Next install the mat for the passenger side of the vehicle as shown in Figure 9.

Figure 9 - Passenger Mat Fit



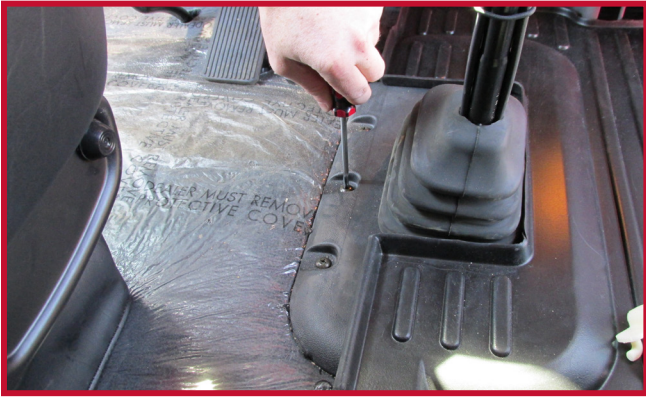
Figure 10 - Automatic Passenger Mat Fit



9. Install the retention hook to secure the driver side floor mat from any movement. Follow installation steps a, b, and c below.

a) Use a #3 Phillips screwdriver to remove the middle left-hand screw from transmission cover. Refer to Figure 11 for screw identification.

Figure 11 - Screw Removal



b) Insert the screw through the hole in the retention hook as shown in Figure 12.

Figure 12 - Hook Installation



c) Insert the hook through the hole in the transmission cover and tighten using a #3 Phillips screwdriver. Orient the hook so it points straight toward the gearshift as shown in Figure 13.

Figure 13 - Proper Hook Orientation



10. Install the driver side floor mat and engage it into the retention hook. The driver mat must be pushed all the way forward so the front lip makes full contact with the lower dashboard kick panels. If installing kit 10002663 or 10002722 nest the right edge of the mat over the top of the left hand edge of the passenger mat to lock the floor mats together. If installing kit 10002675 or 10002728 nest the left edge of the passenger mat over the top of the driver mat.

11. Pull the driver side floor mat to the left to make sure that the retention hook is fully engaged and that the mat is securely fastened to the floor. If the hook is not functioning properly or the mat cannot be securely installed, do not use a Minimizer floor mat on the driver side of the vehicle.

12. FAILURE TO PROPERLY INSTALL THE RETENTION HOOK FOR THE DRIVER SIDE FLOOR MAT MAY ALLOW THE MAT TO SHIFT, WHICH MAY INTERFERE WITH PROPER FUNCTIONING OF THE VEHICLE'S PEDALS, POTENTIALLY RESULTING IN LOSS OF CONTROL OF THE VEHICLE AND SERIOUS INJURY OR DEATH.

13. FAILURE TO PROPERLY INSTALL THE HOOK FOR THE DRIVER SIDE FLOOR MAT MAY ALLOW THE FLOOR MAT TO SHIFT, WHICH MAY INTERFERE WITH PROPER FUNCTIONING OF THE VEHICLE'S PEDALS, POTENTIALLY RESULTING IN LOSS OF CONTROL OF THE VEHICLE AND SERIOUS INJURY OR DEATH.

14. Move the accelerator, brake, and clutch pedals through their full range of motion to confirm there is no interference with the Minimizer floor mat.

15. Prior to operating the vehicle, read the Safety Instructions for Vehicle Operation.

16. FAILURE TO CORRECTLY INSTALL AND USE YOUR MINIMIZER FLOOR MATS ACCORDING TO THE INSTRUCTIONS ABOVE COULD PREVENT PROPER FUNCTIONING OF THE VEHICLE'S PEDALS, POTENTIALLY RESULTING IN LOSS OF CONTROL OF THE VEHICLE AND SERIOUS INJURY OR DEATH.

A DIVISION OF **HIGH BAR BRANDS, LLC**



**HIGH BAR
BRANDS**

2701 18th Street SW, Owatonna, MN 55060
1-800-248-3855 | Fax: 507-583-7540
www.highbarbrands.com